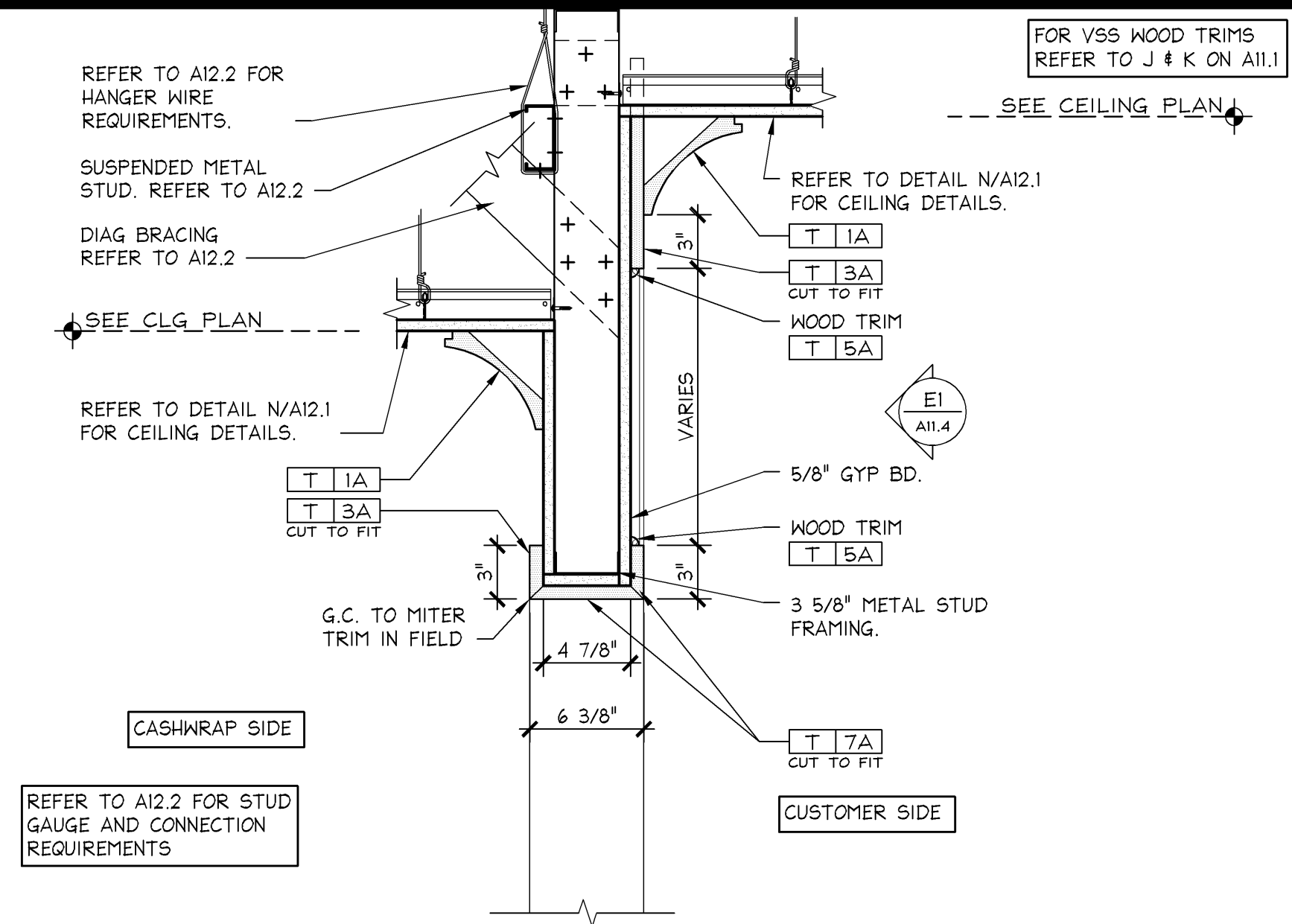
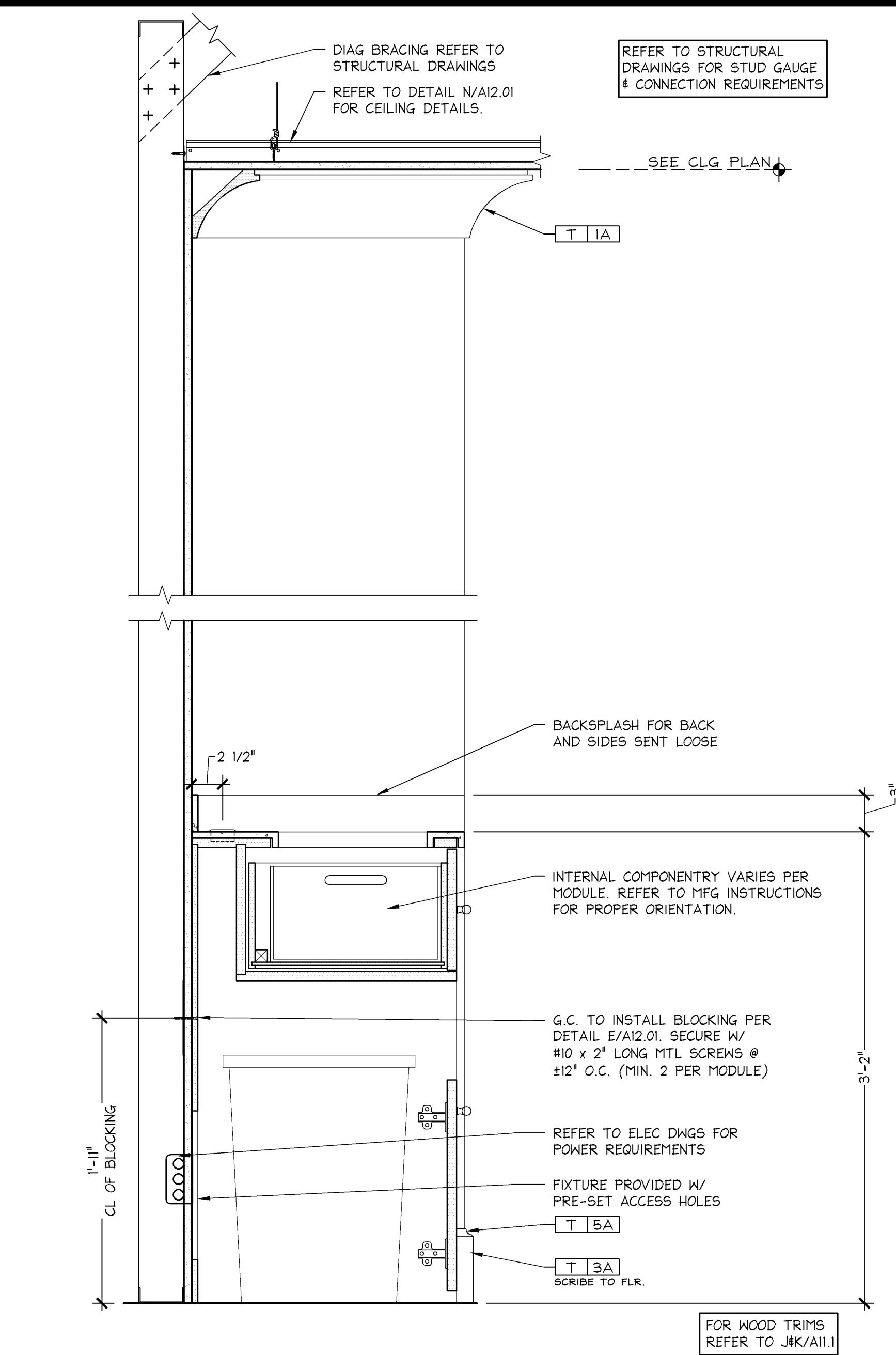


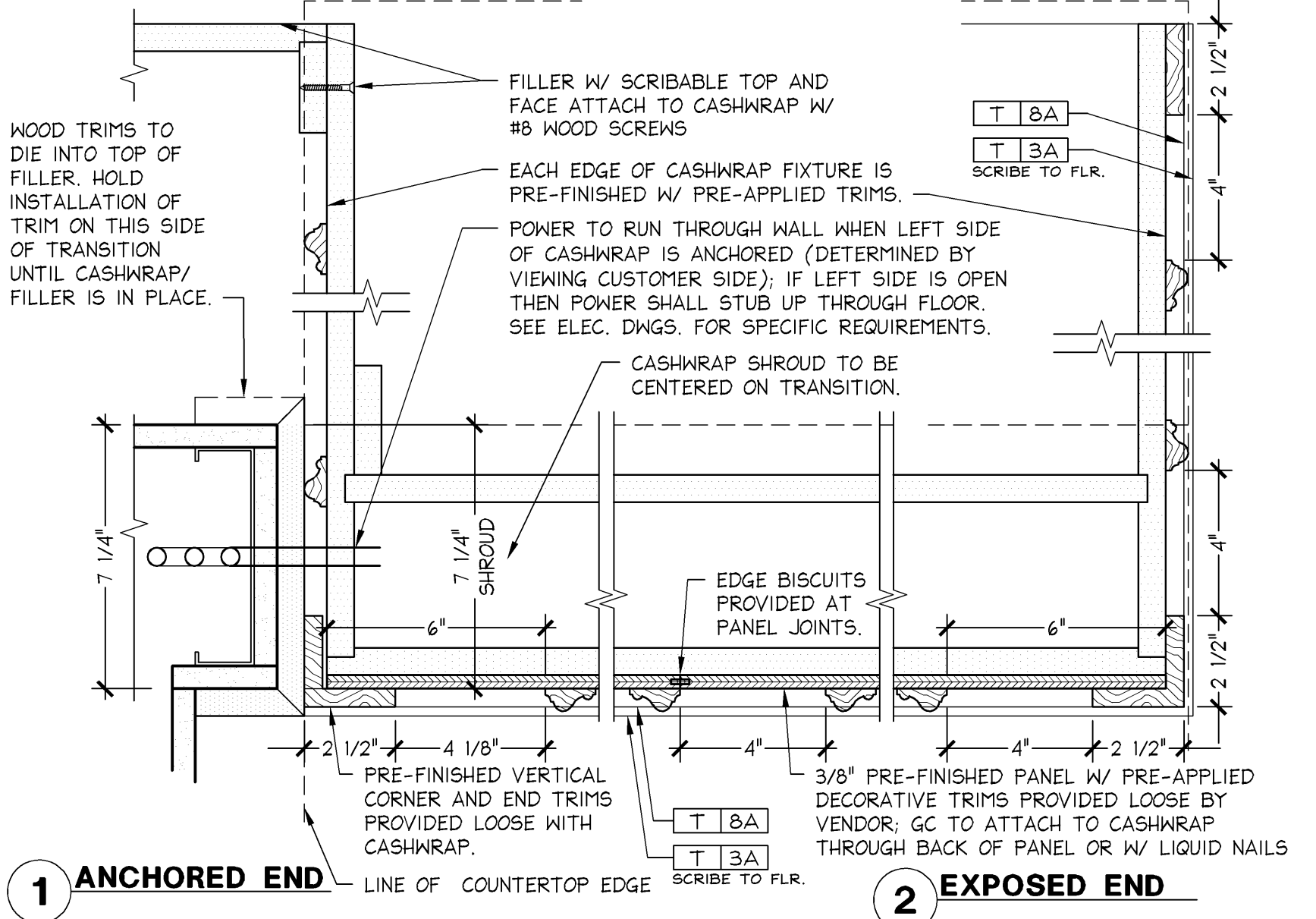
**CASHWRAP SHROUD DETAIL**  
3" = 1'-0"  
05D-A1108-800-DETL 02.21.14



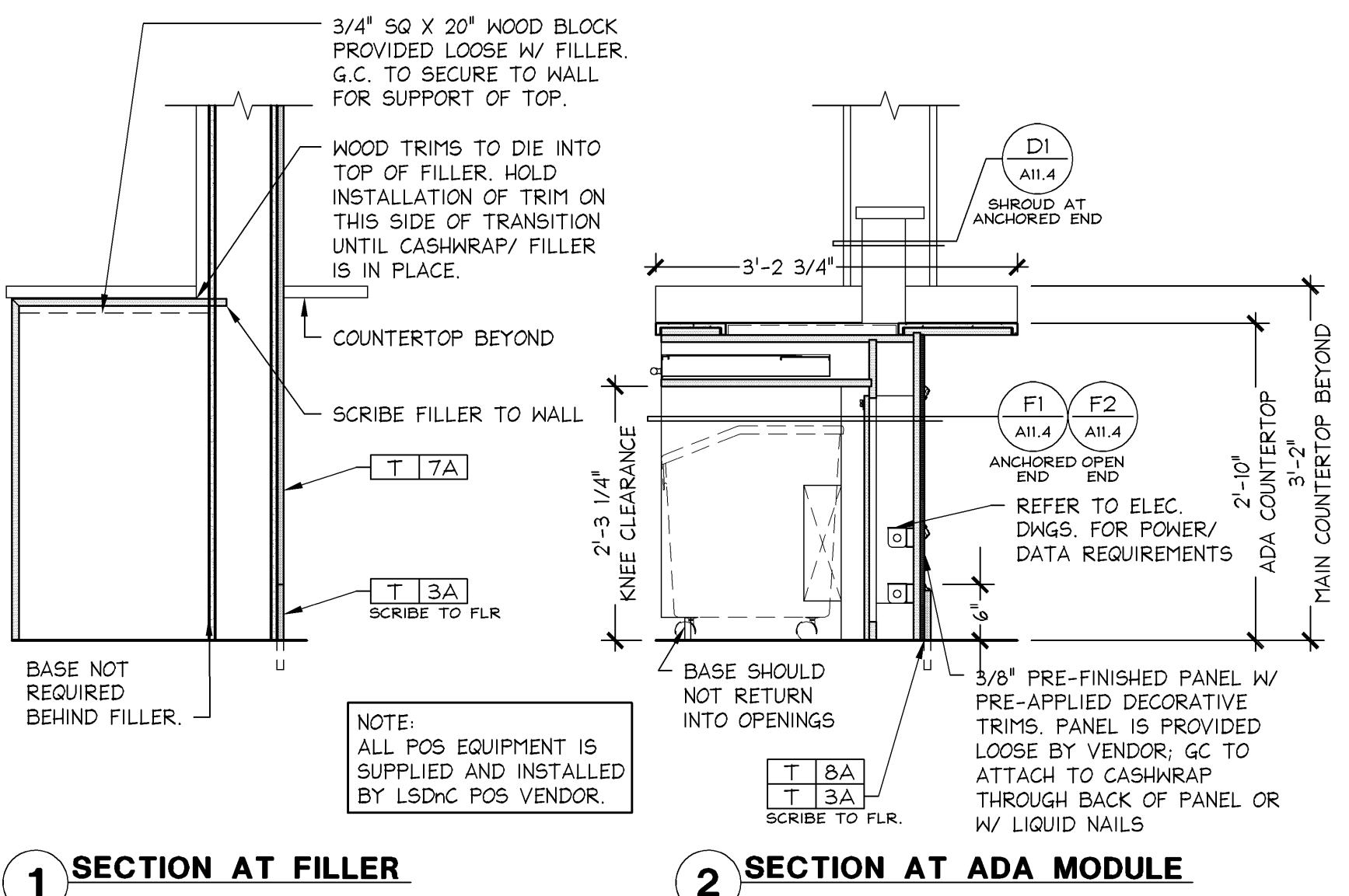
**CASHWRAP HEADER DETAIL (VE)**  
1 1/2" = 1'-0"  
12.20.11



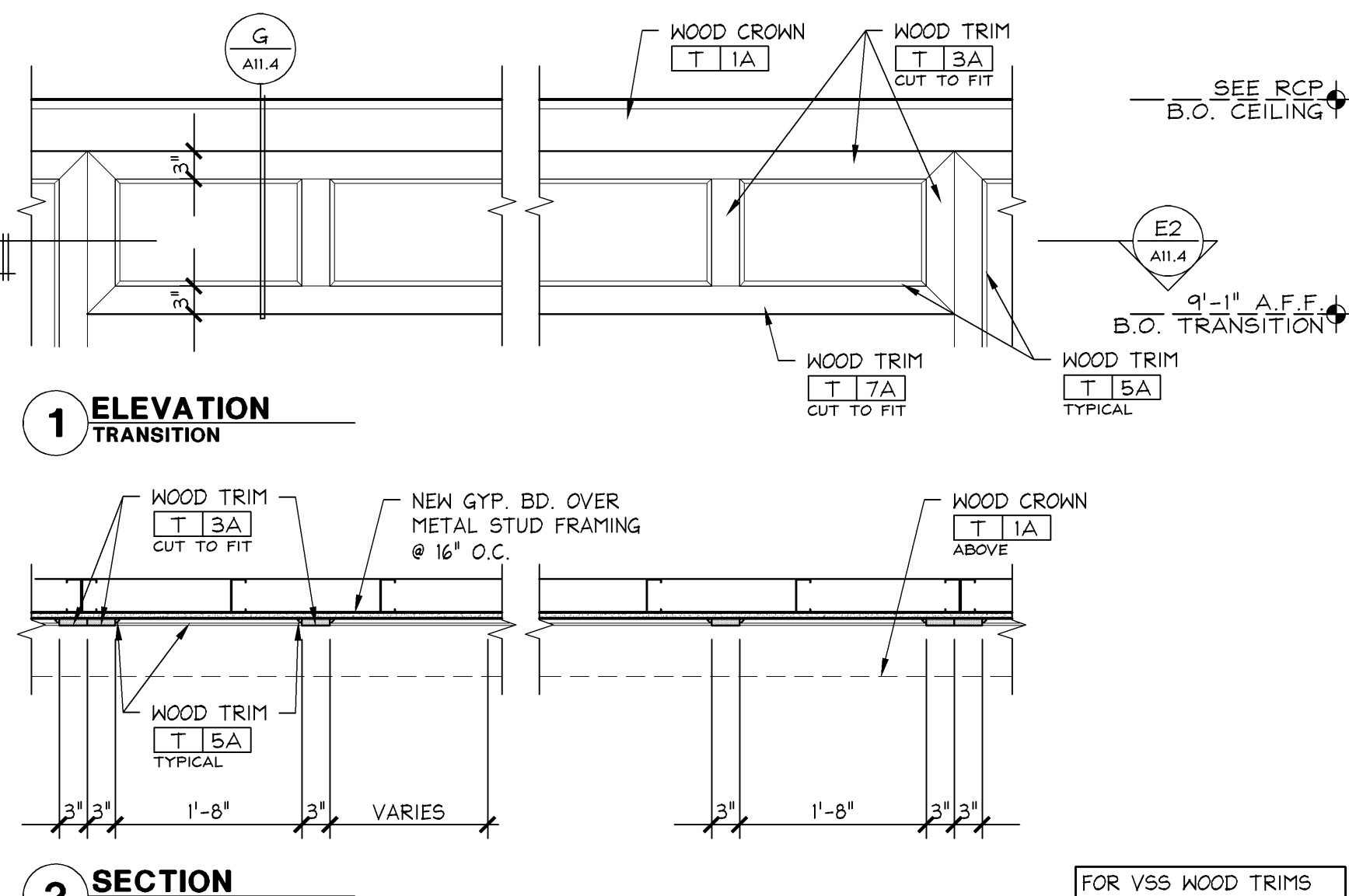
**BACKWRAP SECTION**  
1 1/2" = 1'-0"  
02.22.14



**CASHWRAP SURROUND DETAIL**  
3" = 1'-0"  
05D-A1108-M00-DETL 04.16.14



**CASHWRAP SECTIONS**  
3/4" = 1'-0"  
02.21.14



**CASHWRAP SURROUND AND NEW TRANSITION DETAIL (VE)**  
3/4" = 1'-0"  
12.20.11